



The Malton Elite

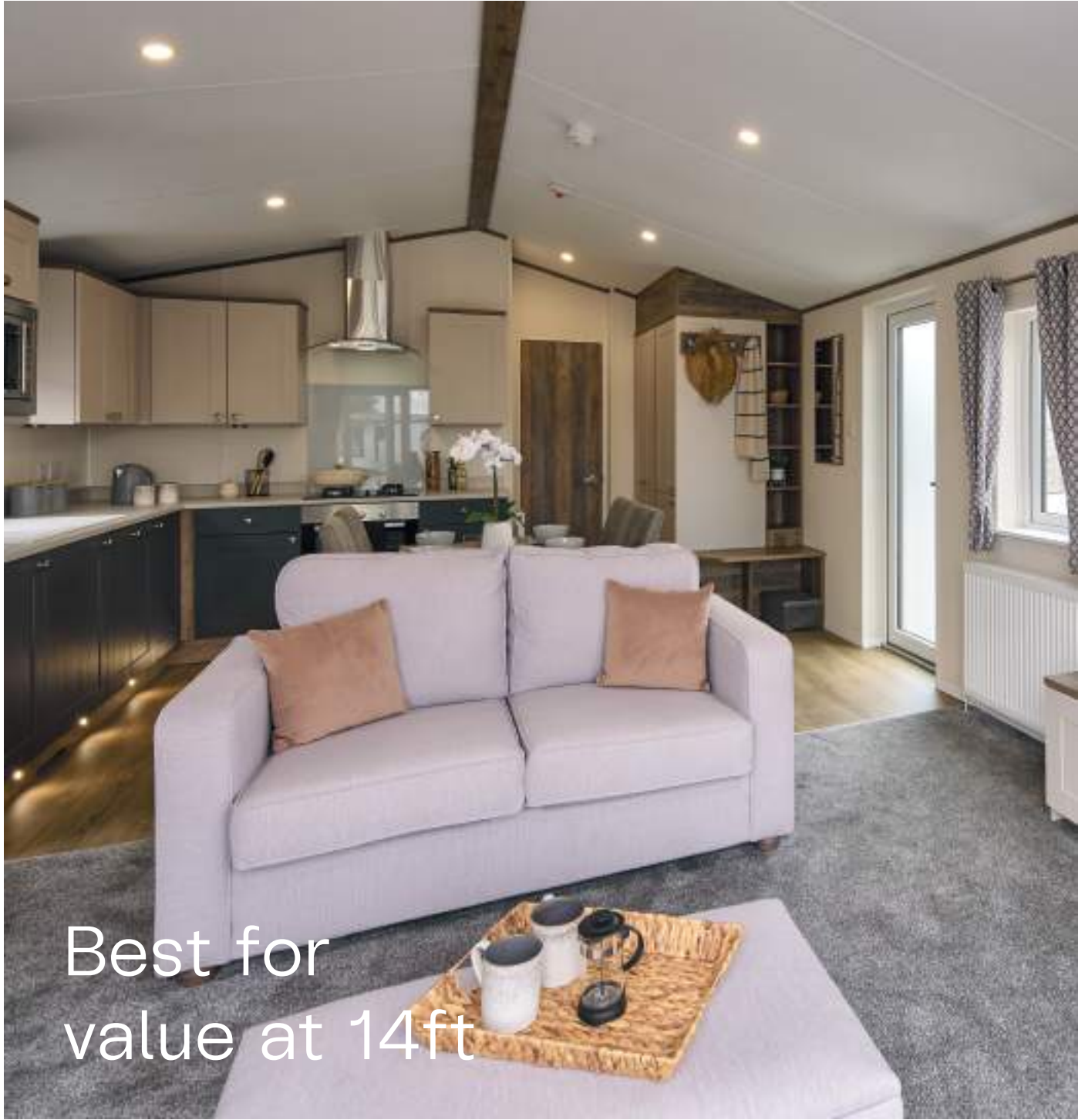
Combining a spacious open-plan layout with a warm and inviting interior scheme of mauve pink and cashmere, the Malton Elite promises a premium look and feel without the premium price tag.



Modelled on our stylish starter home, the Malton, this 14ft version brings the same look and feel on a larger scale, resetting what entry-level looks like on the ever-popular 14ft pitch.

From the moment you step through the door, you'll instantly recognise that there is more than enough space to house all the family. Packed full of practical storage solutions there is also room to store all the clutter that comes with them.

Made to make your holidays as special as you are, this tranquil home offers instant relaxation. It's a modern classic that you'll want to keep coming home to again and again.



Best for
value at 14ft



The Malton Elite lounge is reversible



Scan the QR code
to view the Malton Elite 360

What's included

Everything below is included in the Malton Elite as standard.

Built to our



See page 8

Exterior / structure

- Premium aluminium cladding - standard colour Mist Grey
- Energy efficient white PVCu double glazed windows and doors
- Fully galvanised chassis
- Double sliding patio door

Interior features

- Central heating system with high-efficiency condensing combi boiler

Lounge

- Freestanding sofas with fold-out sofa bed
- Scatter cushions
- Storage footstool
- Side table
- Media unit with TV point

Dining area

- Freestanding dining table
- Upholstered dining chairs

Kitchen

- Integrated microwave
- Freestanding fridge-freezer
- Gas oven/grill with separate hob and glass splashback
- Extractor fan and hood

Main bedroom

- King-size bed with lift-up storage system
- Wardrobe
- Bedside cabinets
- Mirrored dressing table and stool
- Wall-mounted TV point
- Ensuite shower room

Twin bedroom(s)

- Single beds with headboards
- Bedside cabinet
- Wardrobe
- Wall-mounted TV point

Family shower room

- Shower enclosure with thermostatically controlled shower
- Dual flush WC
- Wash basin
- Extractor fan

Make it your own

Below is a list of all the extras available to truly personalise your home. We recommend ticking the ones you want as this will ensure your park or distributor includes the options when providing you with a quote.

CanExel® cladding options (see page 98)

Acadia premium aluminium cladding with Graphite windows (see page 98)

Integrated dishwasher

Integrated washer/dryer

Exterior spotlights to canopy

Hive thermostat

Internet ready pack

Malton Elite Lodge specification - including CanExel® cladding and window frames in a choice of colours, Residential Specification BS 3632 (2023) and Malton Elite Lodge name badge

European specification

Simply Better Sleep upgrade

pack

Eco pack

Coordinated bedding pack

All-E specification (See page 10)

Floor Plans






40 x 14 • 2 bedroom • sleeps 6



43 x 14 • 3 bedroom • sleeps 8

Key

-  Boiler
-  Microwave
-  Fold-out bed
-  Fridge-freezer
-  Wardrobe
-  TV space
-  Oven
-  Dishwasher
-  Washer/dryer space

Model designations shown for the above product(s) are not definitive dimensions. For actual dimensions please refer to the table on page 99. Photography shows the 40 x 14 two bedroom model with optional lodge specification, Barnwood CanExel, graphite PVCu windows and doors, kitchen upgrade pack, coordinated bedding pack and integrated dishwasher. Product photography is intended for illustrative purposes only. Your holiday home may vary from product photography based on your chosen specification, options selected, and availability of materials. Some of the items photographed (such as TV, DVD player, kettle, ornaments, etc.) are accessories used for illustrative purposes only and are not included. Specifications and options are accurate as of 1st August 2025. All specifications and options are subject to change and are superseded by any subsequent publication. Additional product images can be viewed at willerby.com/maltonelite